

Welcome to NETRONIC at the CeBIT Trade Fair 2009

From March 3-8 we will introduce the latest developments of our project charting software GRANEDA Dynamic at the CeBIT trade fair in Hannover, Germany. Come and see us in Hall 5, Stand G22. We are looking forward to demonstrate how projects can be structured clearly and presented in little time, and we will be glad to learn from you what your requirements are to functions of the future version of GRANEDA Dynamic 4.2.

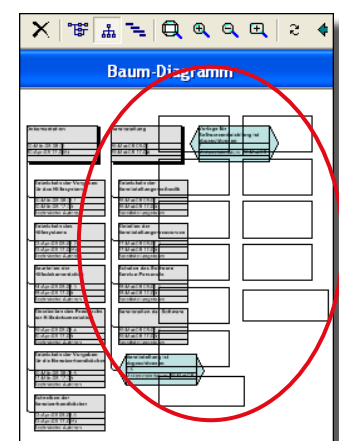
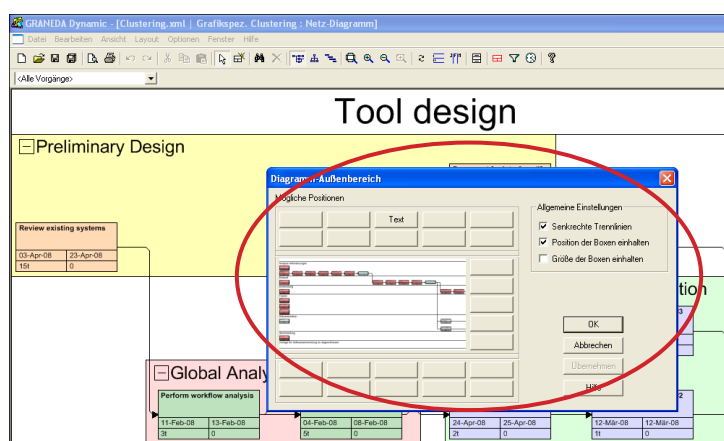
GRANEDA Dynamic 4.1 in Comparative Test

The latest 03/2009 issue of the German Projekt Magazin www.projektmagazin.de reports on a comparative test on Microsoft Project add-ons for work breakdown structures. GRANEDA Dynamic scores excellently as a professional tool. We trust you will have an interesting and informative read.

The evolution of GRANEDA Dynamic 4.1

Our developers are active also between releases. They continuously optimize and enhance details of GRANEDA Dynamic 4.1. Special attention was given to the XML interface of Microsoft Project 2007, which now works much faster.

- For bitmap files a default folder can be set now, so merely the file name needs to be specified for pictures.
- GRANEDA Dynamic now offers a large variety of graphical symbols.
- The Microsoft Project fields **Milestone**, **Critical** and **Summary** automatically are updated.
- Large diagrams can be exported to the png format in higher resolutions.
- Two additional boxes can be displayed in the border area of the chart.



- The tree chart now allows to move several subtrees at a time.
- When printing, the header and footer areas can be moved to the top and bottom edge of the sheet.
- The data fields **Attributes** No.1 through 20 of Microsoft Project 2007 now are available by the XML interface.
- The new menu command **Current working area** opens a dialog that offers information on the files and folders used.

Kaleidoscope of New Customer Projects



New Brunswick Power is the largest electrical utility in the northeast of Canada. The Point Lepreau Generating Station is the first nuclear power station on the Atlantic coast. Its construction is scheduled by network charts of GRANEDA Dynamic.

www.poweringthefuture.nbpower.com

GISA uses GRANEDA Dynamic tree charts for process consultancy. GISA attends to more than 100 middle-class customers in the commercial sectors of energy supply, public domain, telecommunication, media and real estate.

www.gisa.de



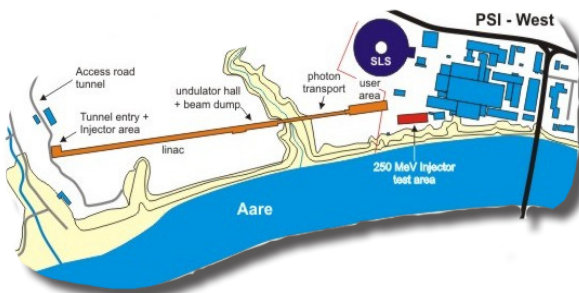
Gleason is the world's leader in gear production technology. Tree diagrams of GRANEDA Dynamic support project management and product structure planning.

www.gleason.com

Qiagen is a globally operating enterprise in the section of medical technology and research.

They use GRANEDA Dynamic in project management, making use of its large variety of visualization options.

www1.qiagen.com



The **Paul Scherrer Institut** in Switzerland uses GRANEDA Dynamic in its X-ray Free Electron Laser (XFEL) project to coordinate scheduling and set-up works.

fel.web.psi.ch



NETRONIC

NETRONIC Software GmbH
Pascalstraße 15
52076 Aachen
Deutschland
Tel +49 (0) 2408 141-0
www.netronic.de