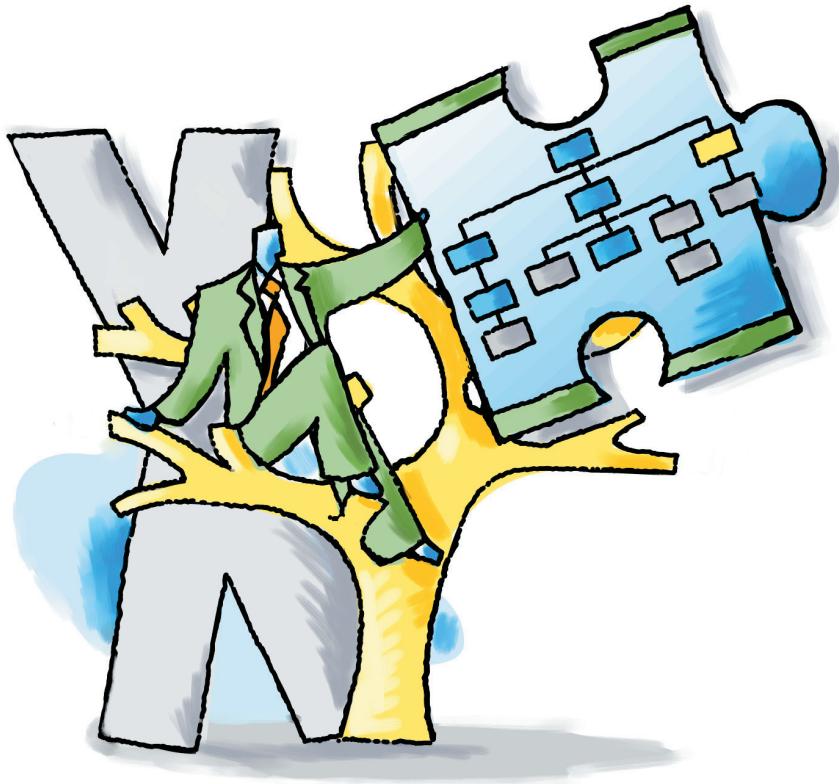


# VARCHART XTree

ActiveX, .NET and ASP.NET Edition

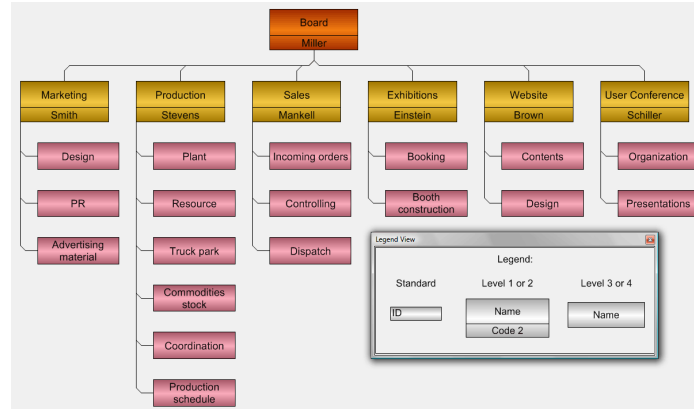
## New in VARCHART XTree 4.2

- ▶ Legend Display on Screen
- ▶ Moveable Diagram Section in World View
- ▶ Data Driven Formatting by Value Ranges
- ▶ Use of the Extended System Print Dialog
- ▶ Size Unlimited PNG Export
- ▶ Enhanced Interactions in ASP.NET Edition



---

## Legend View



The new version allows to display the legend on screen. The legend may be positioned in a window of its own above the diagram or may be attached to one of the four border areas.

---

## Enhancements

- ▶ The concept of generating data driven appearances of objects by map tables was enhanced by the option to define ranges of values. This entails smaller and more versatile maps.
- ▶ Anti-aliasing for fonts can be switched on and off.
- ▶ When setting up a page, a page to be printed can be padded by empty space for a more balanced page layout.
- ▶ The extended system print dialog can now be activated in the print output. Both, the print preview and the print dialog allow to select several page ranges to be printed.
- ▶ The diagram size of PNG files that can be generated does no longer depend on the available size of the main memory.
- ▶ Extended world view functions now allow to scroll the world view in either horizontal or vertical direction. The world view optionally may be positioned in a window of its own above the diagram or may be attached to one of the four border areas.
- ▶ The VARCHAR XTree .NET edition and VARCHAR XTree ASP.NET edition use the .NET framework 2.0 instead of the .NET framework 1.1 (as in previous versions).



---

## Enhanced Interactions in ASP.NET Edition

- ▶ Values can be entered and edited in text fields, number fields and date fields in place.
- ▶ The view can be scrolled now by moving the slider of the horizontal and vertical scroll bars.
- ▶ Activities can be moved by drag & drop in the visible section of the chart (no automatic scrolling yet).



NETRONIC Software GmbH  
Pascalstrasse 15  
52076 Aachen  
Germany  
Phone +49 2408 141-0  
Fax +49 2408 141-33  
Email sales@netronic.com  
www.netronic.com